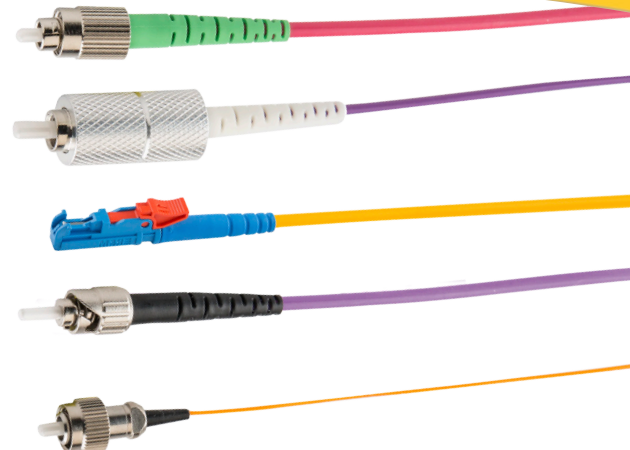


Multimode Cables

- Any combination of connectors, fibers, and cables
- 100% Testing
 - Insertion Loss
 - Endface Geometry
 - Return Loss
 - Polish Quality
- Proprietary epoxy curing for surviving harsh environments
- Built in the USA with quality components
- ISO 9001 Certified



Connectors

Connectors	E-2000	FC, QFC	LC	MU	SC	SMA	ST	1.25mm Ferrule	1.8mm Capillary	2.5mm Ferrule	3.2mm Ferrule
Polish	APC, UPC	APC, UPC Flat Angle	APC, UPC	APC, UPC	APC, UPC	UPC	UPC	APC, UPC	APC, UPC	APC, UPC	APC, UPC
Type	Push/Pull	Screw on	Push/Pull	Push/Pull	Push/Pull	Screw on	Bayonet	Ceramic Stainless	Borosilicate	Ceramic Stainless Borosilicate	Ceramic Stainless

Fibers

Typical values

Core/Cladding (um)	50	62.5	100	100	50	105	200	300	400	600	800	1,000
	125	125	140	140	125	125	220	330	440	660	880	1050
Index	Graded	Graded	Graded	Step	Step							
Attenuation (dB/km)	2.3@850 0.6@1300	2.9@805 0.6@1300	4.0@850 1.5@1300	6.0@850 3.0@1310	Low OH: 15dB @ 400nm 1.0dB @ 1,000 to 1,800nm, 200dB @ 2,200nm High OH: 300dB @ 250nm 1.0dB @ 400 to 900 and 1,000 to 1,100nm							
Numerical Aperture	0.20	0.275	0.29	0.29	0.12 0.22	0.15 0.22	0.22 0.37 Low OH Available					

Cables

OD	900um	1.6mm	2mm	3mm	3.8mm	5mm	5.8mm	7mm
Jacket Material	Hytrel PVC PVDF PTFE	PVC	PVC PVDF Polyurethane	PVC PVDF Polyurethane Stainless	Stainless	Stainless Plastic	Stainless w/ Silicone	Stainless
Strength Member	None	Kevlar						

Performance

Core Size	50 to 105	150 to 1000
Insertion Loss (dB)	<0.2 (0.05 Avail)*	<1.0*
Return Loss (dB)	APC ≥60, UPC ≥50*	-

* Insertion and return loss specifications do not apply to SMA connectors

Coastal Connections custom engineers multimode cables to the tightest specifications in the industry.