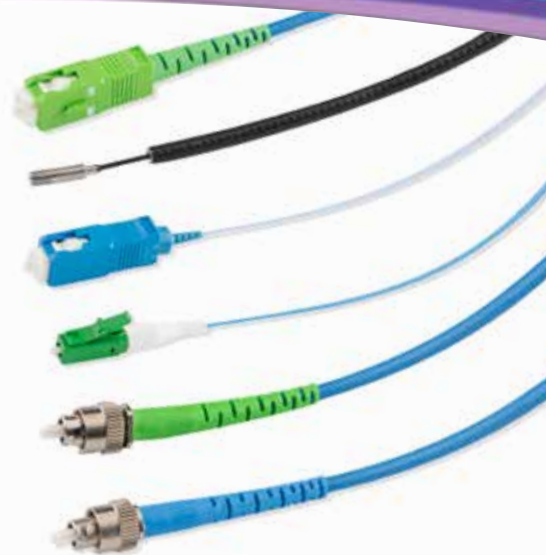




Polarization Maintaining Cables

- Any combination of connectors, fibers, and cables
- 100% Testing
 - Insertion Loss Return Loss
 - Extinction Ratio Endface Geometry Polish Quality
- IL and ER testing at the design wavelength
- Proprietary epoxy curing for high extinction ratios
- Built in the USA with quality components
- ISO 9001 Certified



Connectors

Connectors	FC QFC	LC	SC	1.25mm Ferrule	1.8mm Capillary	2.5mm Ferrule	3.2mm Ferrule
Polish	APC, UPC Angle Flat	APC, UPC					
Type	Screw on	Push/Pull	Push/Pull	Ceramic Stainless	Borosilicate	Ceramic Stainless Borosilicate	Ceramic Stainless

Fibers

Typical values

Wavelength	350	400	RGB	480	630	850	980	1060 1600	1300	1550	1950
Cut-Off (nm)	290-340	330-400	360-405	400-470	520-620	650-800	870-950	LMA	1130- 1270	1300- 1440	1640- 1800
Mode Field (um)	2.3	3.5	2.5 - 3.3	4.0	4.5	5.5	6.6	20 & 30	9.0	10.5	8.0
Attenuation (dB/km)	N/A	≤50	≤30 - ≤ 50	≤ 30	≤ 12	≤ 3.0	≤ 2.5	≤ 15	≤ 1.0	≤ 0.5	N/A
Numerical Aperture	.12	.08	.10 -.13	.075	.09	.10	.10	.08 & .06	.10	.10	.2

Cables

OD	900um	1.6mm	2mm	3mm	3.8mm	5mm	5.8mm	7mm
Jacket Material	Hyrel PVC PVDF PTFE	PVC	PVC PVDF Polyurethane	PVC PVDF Polyurethane Stainless	Stainless	Stainless Plastic	Stainless w/ Silicone	Stainless
Strength Member	None	Kevlar						

Performance

Wavelength	350	400	480	630	780	850	980	1060	1310	1550
Insertion Loss (dB)	≤1.5@405nm (≤1.0 Avail)	≤1.5 (≤1.0 Avail)	≤1.15 (≤0.75 Avail)	≤0.9 (≤0.55 Avail)	≤0.75 (≤0.45 Avail)	≤0.60 (≤0.35 Avail)	≤0.40 (≤0.25 Avail)	≤0.20 (≤0.15 Avail)		
Return Loss (dB)	APC ≥60* UPC ≥45*			APC ≥65* UPC ≥50*						
Extinction Ratio (dB)	≥20 @405nm	≥25 <10M ≥20 ≥10M	≥25							
Key to Fiber Alignment	+/- 2°									

* Return loss on 400 to 1060nm fiber is measured at 1310nm

Coastal Connections custom engineers polarization maintaining cables to the tightest specifications in the industry.